

Strong Clamping Action For Fixturing Small Parts



Patented Tiny Vise® edge clamps from Carr Lane grip the side of a workpiece to keep the top clear for machining.

These unique clamps are available in a wide range of sizes, from a miniature #8-32 thread size up to a powerful 1"-8 thread with 2,500 lbs. clamping force.

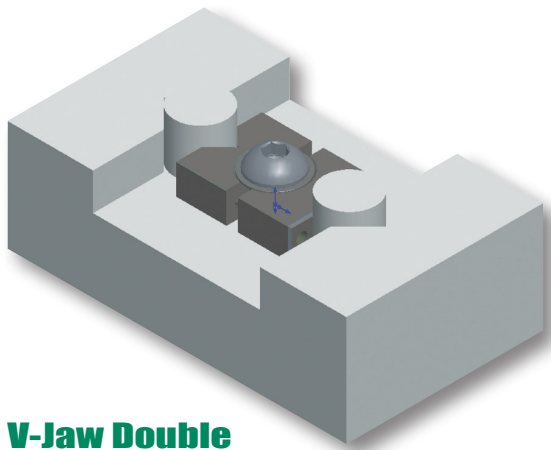
ADVANTAGE #1: Clamping force is applied by positive screw action with the easy turn of a hex wrench (not with an unreliable, unsafe eccentric cam as used in other designs). A high-strength Flat-Head Socket Screw engages a mating offset countersink to exert strong clamping force. Much more durable than other designs.

ADVANTAGE #2: Only Tiny Vise® Edge Clamps truly exert down thrust force on the workpiece, to prevent it from lifting. A thrust washer underneath the clamp engages a mating offset countersink to provide downward action.

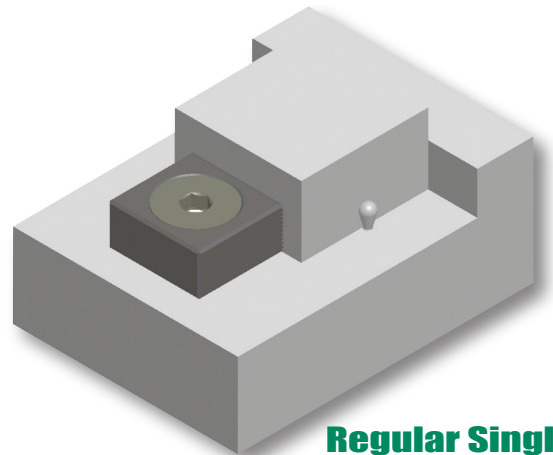


Durable Clamping in a Mini Size

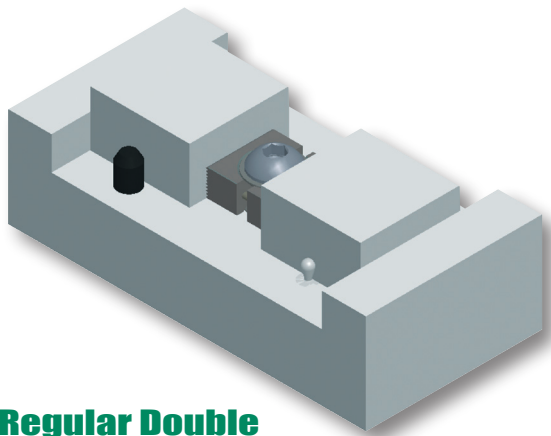
Variations include a double edge version, for clamping two workpieces at the same time, a V-Jaw version for clamping round workpieces, and a double V-Jaw style.



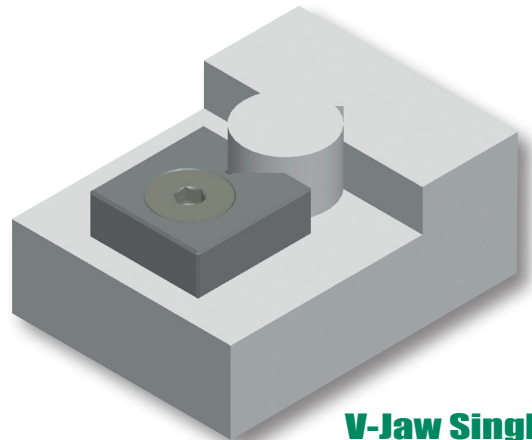
V-Jaw Double



Regular Single



Regular Double



V-Jaw Single